

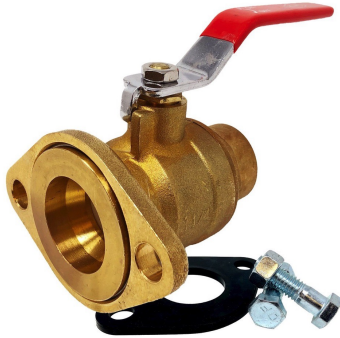


BELVEN

## Brass Ball Valve

FIG. BBV-600FC

### 600 WOG FLANGED x COPPER PUMP ISOLATION VALVE

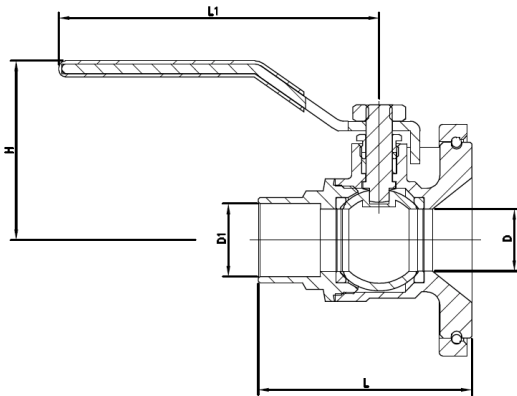
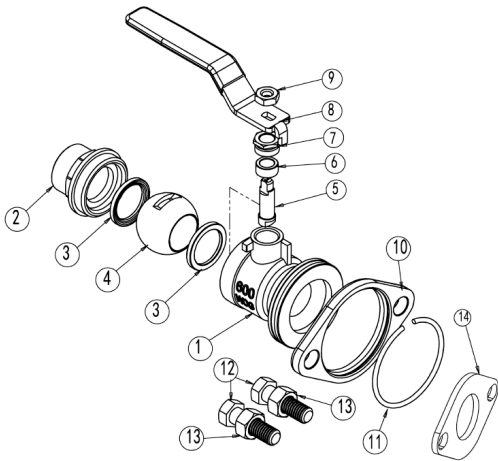


#### Features:

- Heavy duty forged brass pump isolation valve
- Blow-out proof stem
- Rotating flange (From 3/4" to 1 1/2")
- Adjustable packing gland construction
- 600 WOG rating
- Lever handle
- Solder end confirm to ASME B16.18

#### Material List:

No.	Part Name	Specification
1	Body	Brass
2	Bonnet	Brass
3	Seat Seal	PTFE
4	Ball	Brass
5	Stem	Brass
6	Gasket	PTFE
7	Nut	Brass
8	Handle	Q235
9	Nut	Q235
10	Flange	Brass
11	O-Ring	Stainless Steel
12	Screw	Q235
13	Nut	Q235
14	Rubber Gasket	EPDM



#### Options:

- Wing handle
- Removable flange



#### Dimensions:

Size		Dimension				
in	mm	L	L1	L2	D1	H
3/4"	Ø19	65.3	100	14	Ø22.3	56.3
1"	Ø25	83.9	123	18	Ø28.7	68
1 1/4"	Ø31.5	89.3	123	17.3	Ø35	73.8
1 1/2"	Ø38	109.6	152	17.3	Ø41.4	89.5