



FIG.SBV-2150FLM

2-PIECE FULL PORT STAINLESS STEEL FLANGED BALL VALVE CLASS 150 FLANGED ENDS ISO 5211 MOUNTING PAD



Features:

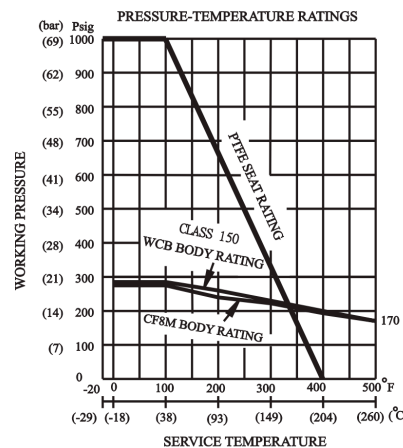
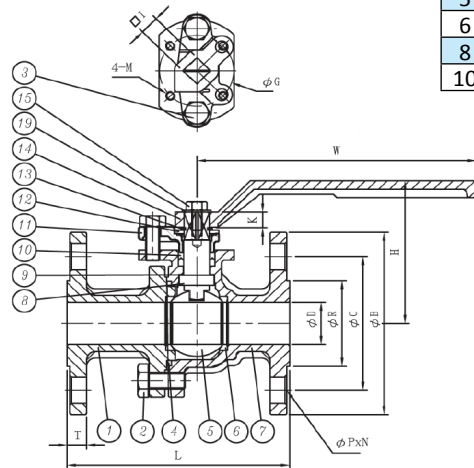
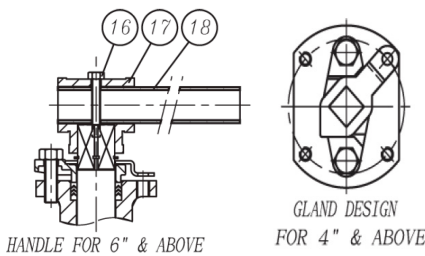
- Split body design with flanged ends for fast installation, in-line maintenance and rebuilding. Solid ball construction provides structural integrity and minimizes flow turbulence.
- Body join is designed to prevent excessive compression of valve internals, resulting in a consistent and low operating torque.
- Mounting pad complied with ISO 5211 for ease and interchangeability of actuation.
- Bottom-loaded blow-out proof stem.
- Investment cast body & cap on sizes 1/2" to 8". Sand cast body & cap on sizes 10" to 12".
- Basic design complied with ASME/ANSI B16.34
- Flanged ends complied with ASME/ANSI B16.5
- Face-to-face dimensions complied with ASME/ANSI B16.10
- Tested according to API 598 & ANSI B 16.34

Dimensions of mounting pad:

Size	I		K		ØG		M
	in	mm	in	mm	in	mm	
1/2	15	0.35	9	0.3	7.5	1.65	42 M5
3/4	20	0.35	9	0.3	7.5	1.65	42 M5
1	25	0.43	11	0.3	7.5	1.65	42 M5
1 1/2	40	0.55	14	0.43	11	2.76	70 M8
2	50	0.55	14	0.43	11	2.76	70 M8
2 1/2	65	0.67	17	0.61	15.5	2.76	70 M8
3	80	0.67	17	0.61	15.5	2.76	70 M8
4	100	0.87	22	0.71	18	4.02	102 M10
5	125	0.87	22	0.71	18	4.02	102 M10
6	150	1.06	27	1.18	30	4.92	125 M12
8	200	1.06	27	1.22	31	4.92	125 M12
10	250	1.42	36	1.38	35	5.51	140 M16

Materials List:

No.	Part Name	Specification
1	End Cap	ASTM A351-CF8M/316
2	Bolt	AISI 304
3	Gland Bolt	AISI 304
4	Gasket	PTFE
5	Ball	ASTM A351-CF8M/316
6	Seat	PTFE
7	Body	ASTM A351-CF8M/316
8	Stem	ASTM A276-316
9	Thrust Washer	PTFE
10	Stem Packing	PTFE
11	Gland	ASTM A351-CF8
12	Handle Stopper	AISI 304
13	Snap Ring	AISI 420
14	Handle	FCD 45
15	Bolt	Zinc Plated Steel
16	Bolt	Carbon Steel
17	Coupler	ASTM A216-WCB
18	Handle	Carbon Steel
19	Washer	Zinc Plated Steel



Dimension:

Size		Ø D		L		T		ØR		ØC		ØB		ØP		N	H		W		Weight	
in	mm	in	mm	in	mm	in	mm	in	mm	in	mm	in	mm	in	mm		in	mm	in	mm	lbs	kgs
1/2	15	0.59	15.00	4.25	108	0.38	9.65	1.38	35.10	2.38	60.50	3.50	88.90	0.62	15.75	4	3.01	76.50	5.12	130	3.59	1.63
3/4	20	0.79	20.00	4.62	117	0.41	10.41	1.69	42.90	2.75	69.90	3.88	98.60	0.62	15.75	4	3.07	78.00	5.12	130	4.25	1.93
1	25	1.00	25.40	5.00	127	0.44	11.18	2.00	50.80	3.12	79.20	4.25	108.00	0.62	15.75	4	3.33	84.50	6.30	160	5.91	2.68
1 1/2	40	1.50	38.00	6.50	165	0.56	14.22	2.88	73.20	3.88	98.60	5.00	127.00	0.62	15.75	4	4.09	104.00	8.27	210	12.04	5.46
2	50	1.97	50.00	7.00	178	0.62	15.75	3.62	91.90	4.75	120.70	6.00	152.40	0.75	19.05	4	4.41	112.00	8.27	210	17.33	7.86
2 1/2	65	2.56	65.00	7.50	190.5	0.69	17.53	4.12	104.60	5.50	139.70	7.00	177.80	0.75	19.05	4	5.28	134.00	12.4	315	27.78	12.60
3	80	2.99	76.00	8.00	203	0.75	19.05	5.00	127.00	6.00	152.40	7.50	190.50	0.75	19.05	4	5.59	142.00	12.4	315	34.02	15.43
4	100	3.94	100.00	9.00	228.5	0.94	23.88	6.19	157.20	7.50	190.50	9.00	228.60	0.75	19.05	8	7.01	178.00	15.75	400	62.37	28.29
5	125	4.92	125.00	14.00	356	0.94	23.88	7.31	185.70	8.50	215.90	10.00	254.00	0.88	22.35	8	7.87	200.00	15.75	400		
6	150	5.91	150.00	15.50	394	1.00	25.40	8.50	215.90	9.50	241.30	11.00	279.40	0.88	22.35	8	9.11	231.50	21.46	545	136.51	61.92
8	200	7.87	200.00	18.00	457	1.12	28.45	10.62	269.70	11.75	298.50	13.50	342.90	0.88	22.35	8	11.48	291.50	35.43	900	264.57	120.01
10	250	9.84	250.00	21.00	533	1.19	30.23	12.75	323.90	14.25	362.00	16.00	406.40	1.00	25.40	12	13.98	355.00	39.37	1000		